

Digital Video Recorder (DVR) Quick Setup Guide

NO:101-600-0170-02
Issue:1.2

Precautions

Fully understand this document before using this device, and strictly observe rules in this document when using this device.

	WARNING It alerts you to moderate dangers which, if not avoided, may cause minor or moderate injuries.
	CAUTION It alerts you to risks. Neglect of these risks may cause device damage, data loss, device performance deterioration, or unpredictable results.
	NOTE It provides additional information.

WARNING

- Strictly observe installation requirements when installing the device. The manufacturer shall not be held responsible for device damage caused by users' non-conformance to these requirements.
- Strictly conform to local electrical safety standards and use power adapters that are marked with the LPS standard when installing and using this device. Otherwise, this device may be damaged.
- Use accessories delivered with this device. The voltage must meet input voltage requirements for this device.
- If this device is installed in places with unsteady voltage, ground this device to discharge high energy such as electrical surges in order to prevent the power supply from burning out.
- When this device is in use, ensure that no water or any liquid flows into the device. If water or liquid unexpectedly flows into the device, immediately power off the device and disconnect all cables (such as power cables and network cables) from this device.
- Do not focus strong light (such as lighted bulbs or sunlight) on this device. Otherwise, the service life of the image sensor may be shortened.
- If this device is installed in places where thunder and lightning frequently occur, ground the device nearby to discharge high

energy such as thunder strikes in order to prevent device damage.

CAUTION

- Avoid heavy loads, intensive shakes, and soaking to prevent damages during transportation and storage. The warranty does not cover any device damage that is caused during secondary packaging and transportation after the original packaging is taken apart.
- Protect this device from fall-down and intensive strikes, keep the device away from magnetic field interference, and do not install the device in places with shaking surfaces or under shocks.
- Clean the device with a soft dry cloth. For stubborn dirt, dip the cloth into slight neutral cleanser, gently wipe the dirt with the cloth, and then dry the device.
- Do not jam the ventilation opening. Follow the installation instructions provided in this document when installing the device.
- Keep the device away from heat sources such as radiators, electric heaters, or other heat equipment.
- Device operating temperature should be kept between - 10 ~ 55, humidity should be controlled between 10% ~ 90%. Keep the device away from moist, dusty, extremely hot or cold places, or places with strong electric radiation.
- Remove the power plug if the device is idle for a long time.

Special Announcement

- All complete products sold by the manufacturer are delivered along with nameplates, quick setup guide and accessories after strict inspection. The manufacturer shall not be held responsible for counterfeit products.
- The manufacturer will update this manual according to product function enhancement or changes and regularly update the software and hardware described in this manual. Update information will be added to new versions of this manual without prior notice.
- This manual may contain misprints, technology information that is not accurate enough, or product function and operation description that is slightly inconsistent with the actual product, the final interpretation of company is as a standard.
- This manual is only for reference and does not ensure that the information is totally consistent with the actual product. For consistency, see the actual product.

NOTE

For more information, please refer to CD and website.

1 Open Package Examination

Open the package, check the appearance of product for no obvious damage, and confirm the item list for table 1-1 is consistent.

Table 1-1 Packing list

Component	Quantity	Remark
Digital Video Recorder	1	
Quick Setup Guide	1	
CD-ROM	1	
Mouse	1	
Power adapter	1	
Accessories package	1	

2 Device Structure

2.1 Device Ports

NOTE

Different device may have different ports, please refer to the actual product.

Figure 2-1 Front panel

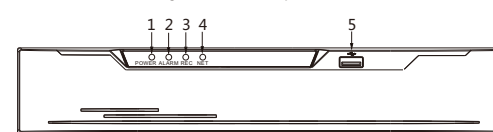


Table 2-1 Front panel description

ID	Port Name	Description
1	POWER	Power indicator, When DVR is operating, the Power indicator is steady on. When DVR is shut down, the PWR indicator is turned off.
2	ALARM	Alarm indicator This indicator flashes when alarm is transmitted.
3	REC	Record indicator This indicator flashes when DVR is recording.
4	NET	Net indicator This indicator flashes when DVR record.
5	USB	Supports connection to an USB mouse and keyboard

Figure 2-2 Rear panel

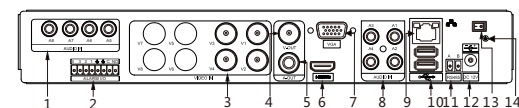


Table 2-2 Rear panel description

ID	Name	Description
1	AUDIO IN	Audio Input
2	ALARM I/O	Alarm Input/Output
3	VIDEO IN	Video input
4	CVBS	CVBS output interface
5	A-OUT	Audio output
6	HDMI	Video output interface
7	VGA	Video output interface
8	AUDIO IN	Audio Input

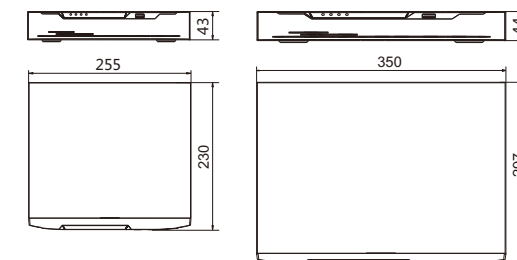
ID	Name	Description
9	LAN network interface	RJ45 10 /100/1000 Mbps adaptive Ethernet interface
10	USB	Supports connection to a USB mouse and keyboard
11	RS485	RS485 port
12	DC power interface	Connected to an external power adapter
13	Power switch	-(Optional for different DVR)
14	Ground screw	Safe ground screw of the device

2.2 Device Dimensions

NOTE

Different device may have different dimensions, please refer to the actual product.

Figure 2-3 Dimensions (Unit:mm)



3 Device Installation

The hard disk of the DVR must be provided by the user. Take the following steps to install hard disks :

- Step 1 Remove the screws for fixing the cover and take down the cover.
- Step 2 Take out the screws and fix the screws of hard disk as shown in figure 3-1.

Figure3-1 Installing hard disk



- Step 3 Insert the hard disk data cable and power cable as shown in figure 3-2.

Figure3-2 Insert hard disk data cable and power cable



- Step 4 Put on the upper cover and fasten the fixing screws.

4 Device Operation

4.1 Startup

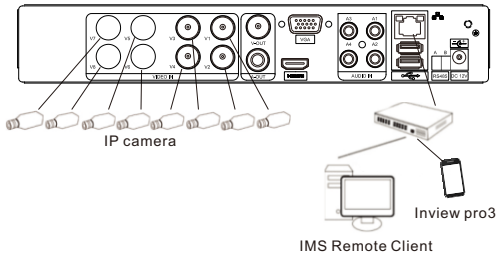
Before starting DVR, ensure that the DVR is connected to a power supply properly and a monitor is connected to the HDMI or VGA interface of the DVR correctly. DVR will enter the live video interface and the power indicator will be on, when DVR powers on.

CAUTION In some environments, if the power supply is abnormal, the DVR may not work properly. In severe cases, the DVR may be damaged. In these environments, you are advised to use regulated power supply.

4.2 Topology of the DVR

A free network includes other network devices in addition to IP cameras and DVR. The topology of a free network can be organized freely so long as DVR and IP cameras can communicate with each other smoothly.

Figure 4-1 Topology of the DVR



4.3 Power off

choosing **Main Menu > System Settings > Advanced setting > shutdown** to power off the DVR. Click **Power** and choose shutdown or pressing the power switch to power off the DVR if the power switch exist in rear panel.

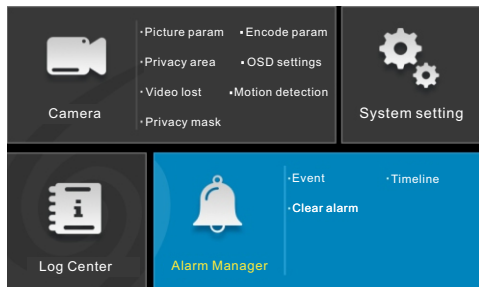
NOTE

- If the DVR is shut down abnormally, it can automatically backup video and resume previous working status after power failure.
- Before replacing the hard disk, the power supply switch in the real panel must be turned off.

5 Quick Configuration

After access the DVR user page, right-click the user page, the Main Menu displays. Main Menu comprises Camera, System Settings, Log Center and Alarm Manager, as shown in figure 5-1.

Figure 5-1 Main menu



5.1 Camera

Camera comprises Camera Add or Delete, Picture Param, Privacy area, Video lost, Privacy mask, Encode Param, OSD setting and Motion Detection.

- Add or Delete:** you can add a camera to a DVR channel or click **Click Add** to automatically search for and add cameras on the network. Select a camera on a channel and click **Clear** to delete the selected camera, as shown in figure 5-2.
- Picture Param:** Based on scenarios, the brightness, contrast, saturation and sharpness parameters can be automatically or manually set for cameras on different channels. You can click **Apply to All** to apply the parameter settings to all cameras as shown in figure 5-3.
- Encode Param:** You can set resolution, image quality (Low, Medium, High, or Highest), frame rate, Bitrate and Bitrate type of the camera on the current channel and stream.
- Video loss:** If a camera was disconnected, it will show video loss.
- Motion Detection:** Press left button and drag the cursor to select a detection area, and then double-click an area to delete the it.
- Privacy area:** Press left button and drag the cursor to select a sheltering area, and then double-click an area to delete the it.
- OSD Settings:** Custom the time and OSD displayed in the live video page.

Figure 5-2 Add or Delete

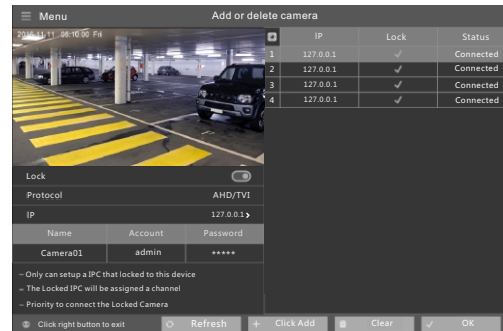


Figure 5-3 Picture Param



5.2 Setting

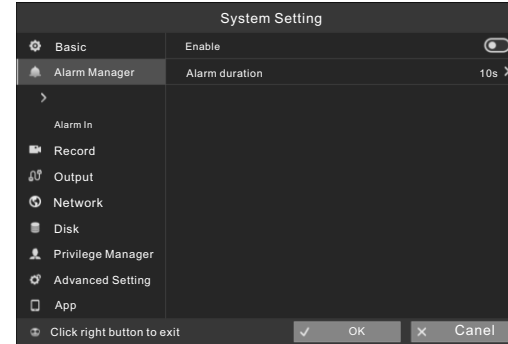
Setting includes Basic, Alarm Manager, Record, Output, Network, Disk, Privilege Manage, Advanced setting and APP, as shown in figure 5-4.

- Basic:** includes system and time. You can view the DVR firmware version, compile time, product model, device name display and language in system setting.
- Alarm manager:** You can enable surveillance to set the alarm duration and enable alarm in to set the alarm type, name and processing method.
- Record:** You can enable schedule record to set record schedule.
- Output:** Configure layout and CVBS output.
- Network:** You can set IPV4, port, DDNS and black list in network setting.
- Disk:** You can view the disk size, the disk usage and SN for disk.
- Privilege manager:** You can add, delete, edit user, modify

password and set E-mail for password return for DVR.

- Advanced setting:** You can reset, reboot and shutdown DVR in advanced setting.
- APP:** Obtain the QR code for app.

Figure 5-4 System Setting

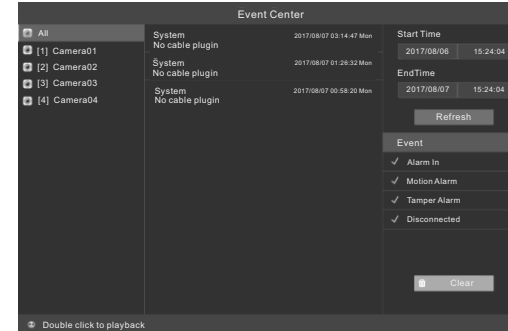


5.2 Alarm

Alarm comprises Event Center, Time Setting and Event Type Selection as shown in figure 5-5.

- Event Center:** You can view the alarm event list of a camera, and play back event videos by double-click the event records in the event center.
- Start Time & End Time:** You can click the date and time input boxes to display the date and time drop-down list boxes, where you can set the start and end time of alarms.
- Event:** comprises multiple alarm modes such as Alarm in, Motion alarm, Tamper alarm and disconnected. You can select an alarm type based on requirements.

Figure 5-5 Alarm



5.3 Live Video

Input the user name and password on the login page, then click Login to access the live video page, as shown in figure 5-6.

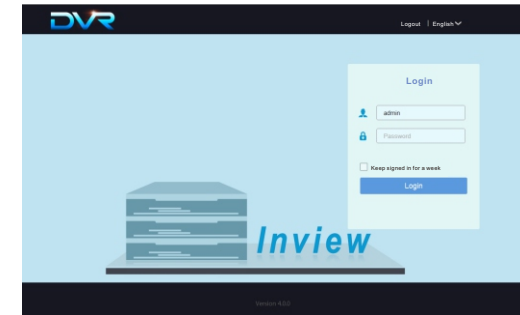
Figure 5-6 Live video



5.4 Web

This DVR can be accessed through Web. Open the web browser such as Firefox, input the device IP address (192.168.0.121 by default) in the address box, and press Enter. The login page is displayed, as shown in figure 5-7.

Figure 5-7 Login



NOTE

The default user name is **admin**. The default password is **admin**. You are required to change the password when you log in the system for first time to ensure system security.

6 Mobile client

Scan the Android or IOS QR code on the **Main Menu > System Settings > APP** by using a browser or other software that supports QR code scanning on a mobile device, download and install the client based on the prompt. Or search for "InviewPro3" in APP Store or Google Play, download and install the client.

Figure 6-1 APP

